

# DRILLS, HOLE SAWS, DIAMOND TOOLS

## Interchangeable centring drill

On a step drill, the tapping device is the part that is under the most stress. Therefore, CIMCO step drills have exchangeable centring drill. Once the centring drill becomes worn, it is only these drills that are replaced within a matter of seconds and not the entire drill bit – which saves a lot of money.

## Three flutes

On CIMCO step drills, the cutting load is distributed differently than on single or double flute constructions as it is distributed over 3 blades. This means a higher cutting performance, low pressure and vibration-free working as well as low wear!

## Back taper

Each step has a radial and axial back taper, whereby the blade represents the highest point in diameter and in the cutting step – ensuring the utmost in cutting performance and complete smoothness!

## Three drive surfaces

The drill bit shaft has three clamping surfaces. This ensures a solid hold in the chuck and prevents slipping in the machine, even when dealing with severe loads.

## Special centring point design

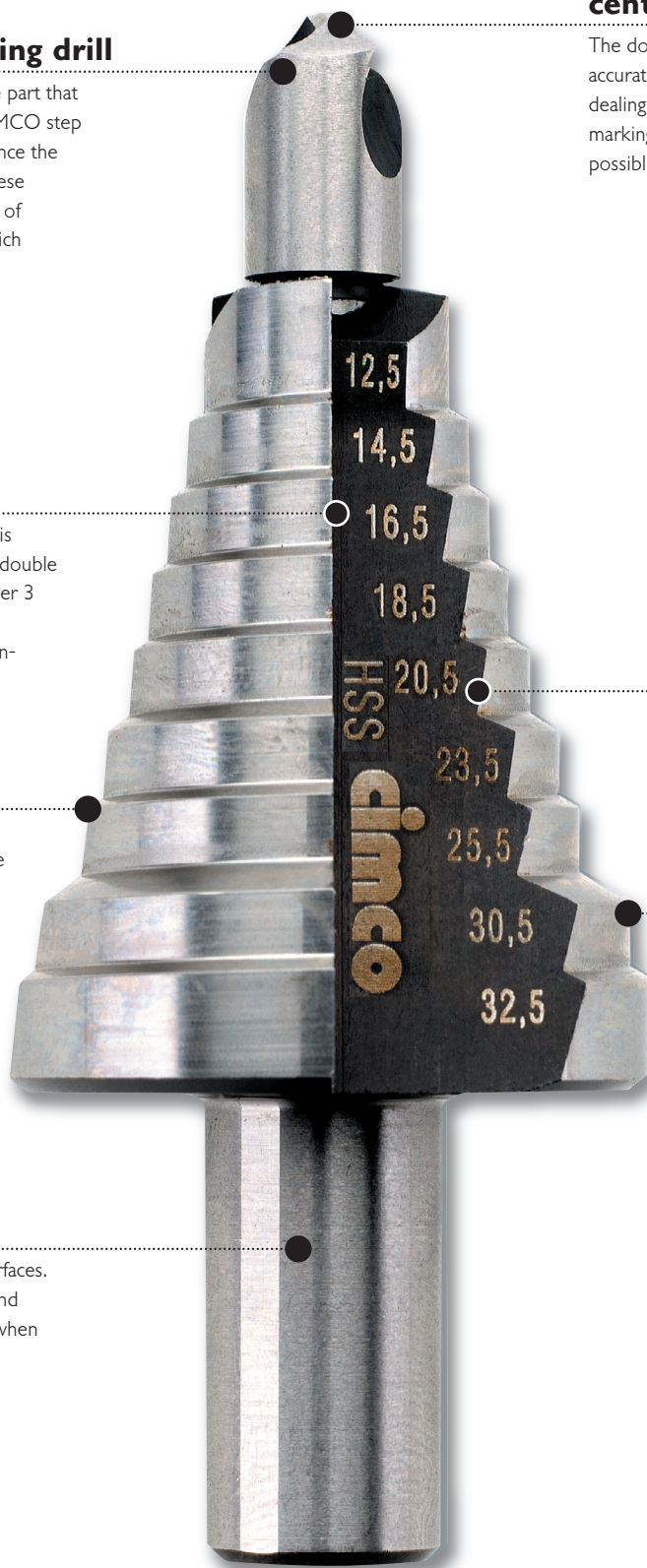
The double-edged drill bit shape guarantees accurate centring and drilling, even when dealing with thin-walled material – no punch-marking or pre-drilling required and it is not possible to slide away.

## Laser-inscribed drilling steps

Each hole diameter can be accurately read in the flutes.

## Automatic deburring

drilling through the transition and into the next drill bit step in the same work stage prevents sharp edges.



## 550 W pneumatic rotary drill hammer

NEW

- Lightest rotary drill hammer with the best power to weight ratio in the world.
- Low weight and an ergonomic design enable low-fatigue working, especially when performing overhead work.
- Reversing brush system enables maximum torque in both clockwise and anti-clockwise directions (jammed drill bits can be released without any problems whatsoever).
- Excellent drilling progress thanks to sophisticated impact mechanism technology, ideally designed for a diameter range of 6-12 mm (dowel holes).
- Robust magnesium die-cast drive housing for ideal impact performance and long service life.
- Impact stop for normal drilling and screwing.
- Control electronics for sensitive drilling.
- Safety slipping clutch protects the user if the drill bit should become jammed.
- Power cable module measuring 4 m ensures a great freedom of movement.
- 10-year device warranty includes a 2-year full warranty (incl. wear parts).

Included in delivery: 550 W pneumatic rotary drill hammer and 2-component soft handle complete with drilling depth stop. Supplied in a professional plastic case.

Power consumption	550 Watt
Idling speed	0...1450 rpm
Nominal speed	900 rpm
Idling mode impact rate	5790 rpm
Impact rate at nominal load	4010 rpm
Impact energy	1.8 Joule
Recommended drilling range	
Hammer drilling up to a ø of:	4-12 mm
Hammer drilling in concrete:	18 mm
Drilling in steel up to a ø of	13 mm
Drilling in wood up to a ø of	25 mm
Clamping collar ø	43 mm
Machine weight	1.7 kg

1

11 0002



## 850 W 2-speed hammer drill

NEW

- Ergonomic design with rubberised handle surfaces for low-fatigue and slip-free work.
- Full wave electronic system with speed pre-selection for sensitive drilling and accurate screwing.
- Reversing brush system enables maximum torque in both clockwise and anti-clockwise directions (jammed drill bits and driven-in screws can be released without any problems whatsoever).
- Mechanic 2-speed drive with high torque in 1st gear for screwing and high speed in 2nd gear for drilling.
- Robust aluminium die-cast drive housing for ideal impact performance and long service life.
- Powerful 850 Watt motor for excellent drilling performance.
- Impact stop for normal drilling and screwing.
- Impact-resistant metal quick-action chuck ø 13 mm.
- Safety slipping clutch protects the user if the drill bit should become jammed.
- Suitable for use in drill stands thanks to the 43 mm clamping collar and speed pre-selection complete with locking button.
- Power cable module measuring 4 m ensures a great freedom of movement.
- 10-year device warranty

Included in delivery: 850 W 2-speed hammer drill and 2-component soft handle complete with drilling depth stop. Supplied in a professional plastic case.

Power consumption	850 Watt
1st gear idling speed	0 ... 1250 rpm
2st gear idling speed	0 ... 3000 rpm
Idling mode impact rate	48000 rpm
Chuck adapter	1/2" x 20 UNF
Drilling capacity in ø:	
Wood	40 mm
Steel	13 mm
Impact drilling in concrete	20 mm
Clamping collar ø	43 mm
Machine weight	2.3 kg

1

11 0004



## 14.4 V 2-speed cordless screwdriver

- Powerful cordless combination drill in compact and light design.
- QuiXS rapid-action chuck changing system - screw bit in the spindle and drill bit in the chuck - rapid changeover between drilling and screwing possible without having to exchange tools.
- Long service life thanks to intelligent overload protection.
- 2-speed planetary drive with high torque in 1st gear for screwing and high speed in 2nd gear for drilling.
- Robust aluminium die-cast drive housing for a long service life.
- Extremely brief charging time of only 15 minutes (charging time can be viewed on the capacity display).
- Lithium ion battery technology.
- Winner of the iF product design award 2010 – award for ergonomics & functionality.
- 10 year device warranty and 2 year battery warranty.

Battery 14.4 Volt / 1.5 Ah Li-Ion

1st gear idling speed 0...360 rpm

2nd gear idling speed 0...1500 rpm

Corner dimension 30 mm

Chuck span 1.5 – 13 mm

Drilling in wood up to a ø of 38 mm

Drilling in steel up to a ø of 13 mm

Screwing in wood up to a ø of 10 mm

Max. torque (hard) 55 Nm

Max. torque (soft) 35 Nm

Charging time 15 min.

Machine weight without chuck 1.3 kg

Machine weight with chuck 1.6 kg

Dimensions without chuck 172 x 58 x 212 mm

Dimensions with chuck 224 x 58 x 212 mm

Included in delivery: 14.4 Volt 2-speed cordless screwdriver, ø 13 mm quick-clamping chuck, second battery pack, CSL 30 LI quick charger with cable storage, drive protective cap. Supplied in a professional plastic case.

1

11 0006



## Twist drill

according to DIN 338/HSS Type N, short cylindrical, right-hand cutting, roll-forged design

ø mm	Total length	Spiral length		
1.0	34	12	10	20 0314
1.5	40	18	10	20 0324
2.0	49	24	10	20 0334
2.4	57	30	10	20 0342
2.5	57	30	10	20 0344
2.8	61	33	10	20 0350
3.0	61	33	10	20 0354
3.1	65	36	10	20 0356
3.2	65	36	10	20 0358
3.3	65	36	10	20 0360
3.5	70	39	10	20 0364
4.0	75	43	10	20 0373
4.1	75	43	10	20 0374
4.2	75	43	10	20 0375
4.5	80	47	10	20 0379
4.8	86	52	10	20 0383
5.0	86	52	10	20 0385
5.1	86	52	10	20 0386
5.2	86	52	10	20 0387
5.5	93	57	10	20 0391
6.0	93	57	10	20 0397
6.5	101	63	10	20 0403
6.8	109	69	10	20 0407
7.0	109	69	10	20 0409
7.5	109	69	10	20 0415
8.0	117	75	10	20 0421
8.5	117	75	10	20 0427
9.0	125	81	10	20 0433
9.5	125	81	10	20 0439
10.0	133	87	10	20 0445
10.2	133	87	10	20 0447
10.5	133	87	10	20 0451
11.0	142	94	10	20 0457
11.5	142	94	10	20 0463
12.0	151	101	5	20 0469
12.5	151	101	5	20 0472
13.0	151	101	5	20 0476

Further dimensions, particularly intermediate dimensions, available ex stock.

## Twist drill assortment

according to DIN 338, in highly-stable plastic box with clamping bar for each drill bit

Unit	ø mm	Increasing by		
		mm		
Roll-milled drill bit, HSS				
19	1 - 10	0.5	1	20 1352
25	1 - 13	0.5	1	20 1354
Profile-grounded drill bit, HSS, bare design				
19	1 - 10	0.5	1	20 1358
25	1 - 13	0.5	1	20 1360

## Twist drill assortment

in round plastic box, roll-milled drill bit, HSS, according to DIN 338

Unit	ø mm	Increasing by		
		mm		
19	1 - 10	0.5	1	20 1320

## Twist drill workshop magazine

in metal box, roll-milled drill bit, HSS, according to DIN 338, 170 piece, increasing by 0.5 mm

10 units each of 1.0 - 8.0 mm and 5 units each of 8.5 - 10.0 mm	1	20 1340
---	---	---------



## Stone and concrete drill bit

with carbide tipped blades and cylindrical shaft, ideal for use in cordless combination drills, optimised for constantly recurring applications in masonry

ø mm	Total length	Spiral length		
4	85	45	10	20 1604
5	90	50	10	20 1610
6	100	60	10	20 1614
	150	110	10	20 1702
	400	275	10	20 1752
7	100	60	10	20 1618
8	120	80	10	20 1622
	400	275	10	20 1758
	600	350	5	20 1854
10	150	110	10	20 1630
	400	275	10	20 1760
	600	400	5	20 1856
12	150	90	10	20 1634
	400	275	10	20 1762
	600	550	5	20 1858
14	150	90	10	20 1638
	600	500	10	20 1862

## Stone and concrete drill bit assortment, 7-piece

for hammer drills and cordless screwdrivers. With round shaft and four-spiral conveying helix for a rapid transportation of the drilling dust. Hard metal tips, premium soldering. In a practical plastic box.

Drill bit ø x length mm

4 x 80 / 5 x 95 / 5 x 150 / 6 x 100 / 8 x 120 / 10 x 120 / 12 x 150 mm 1 20 1380

## PROFI SDS-Plus hammer drill

with carbide tipped blades, high drilling speed thanks to the wide Twinmax helix, the user is protected by the vibration-optimised drilling behaviour, certified by the German Masonry Drill Bit Testing Association (PGM) in accordance with the requirements as set out by the German Institute for Building Technology (DIBt), suitable for all machines with SDS plus receivers, Made in Germany

ø mm	Total length	Spiral length		
5	110	50	1	20 8302
	160	100	1	20 8304
6	110	50	1	20 8308
	160	100	1	20 8310
7	110	50	1	20 8316
	160	100	1	20 8318
8	110	50	1	20 8320
	160	100	1	20 8322
	210	150	1	20 8324
10	110	50	1	20 8328
	160	100	1	20 8330
	210	150	1	20 8332
	310	250	1	20 8334
	460	400	1	20 8336
12	160	100	1	20 8342
	210	150	1	20 8343
	310	250	1	20 8344
	450	400	1	20 8346
	600	550	1	20 8348
14	160	100	1	20 8354
	200	150	1	20 8355
	300	250	1	20 8356
	450	400	1	20 8357
15	250	200	1	20 8360
16	160	100	1	20 8362
	200	150	1	20 8364
	450	400	1	20 8366
	600	550	1	20 8368
18	200	150	1	20 8372
	450	400	1	20 8373
19	450	400	1	20 8378
20	200	150	1	20 8380
	450	400	1	20 8382
22	250	200	1	20 8384
	450	400	1	20 8386
24	250	200	1	20 8388
25	300	250	1	20 8390

Further sizes on request.



## SDS-Plus hammer drill assortment, 7-piece

equipped with drill bits from our 20 8300 ff. range, supplied in a stable plastic cartridge.

Drill bit ø x length mm

5 x 110 / 6 x 110 / 6 x 160 / 8 x 110 / 8 x 160 / 10 x 160 / 12 x 160	1	20 1395
---	---	---------

## SDS-Plus hammer drill CIMCO

with carbide tipped blades, for all concrete and stone applications (concrete, aerated concrete/YTONG, sand-lime brick masonry, stone), certified by the German Masonry Drill Bit Testing Association (PGM) in accordance with the requirements as set out by the German Institute for Building Technology (DIBt), suitable for all machines with SDS plus receivers

ø mm	Total length	Spiral length		
5	110	50	1	20 8602
	160	100	1	20 8604
5.5	110	50	1	20 8605
	160	100	1	20 8606
6	110	50	1	20 8608
	160	100	1	20 8610
6.5	110	50	1	20 8616
	160	100	1	20 8618
8	110	50	1	20 8620
	160	100	1	20 8622
10	210	150	1	20 8624
	110	50	1	20 8628
	160	100	1	20 8630
	210	150	1	20 8632
12	310	250	1	20 8634
	450	400	1	20 8636
	160	100	1	20 8642
	210	150	1	20 8643
14	310	250	1	20 8644
	450	400	1	20 8646
	600	550	1	20 8648
	160	100	1	20 8654
16	210	150	1	20 8655
	310	250	1	20 8656
	450	400	1	20 8657
	160	100	1	20 8662
18	210	150	1	20 8664
	450	400	1	20 8666
	600	550	1	20 8668
	210	150	1	20 8672
20	450	400	1	20 8673
	210	150	1	20 8680
	450	400	1	20 8682
	310	250	1	20 8684
22	450	400	1	20 8686
	310	250	1	20 8690

Further sizes on request.



## TripleX SDS-Plus hammer drill

triple-winged carbide tipped blades with a wave-like head design and laterally reinforced blade shape make the TripleX permanently strong in the hardest concrete. Also suitable for stone, aerated concrete, sand-lime brick masonry. The TripleX owes its extreme service life and powerful drilling behaviour to an innovative and very wide hard metal design of the drilling head. The embedded hard metal head created by means of a novel production process with a curved shape withstands the highest of forces. Thanks to its three wide helixes in combination with the three hard metal blades, an ideal drilling dust removal is ensured without the drilling dust being blown out. Also remains firm in the event of reinforcement being struck.

The TripleX is certified by the German Masonry Drill Bit Testing Association (PGM) in accordance with the requirements as set out by the German Institute for Building Technology (DIBt).

ø mm	Total length	Spiral length		
5	110	50	1	20 8400
5	160	100	1	20 8402
5.5	110	50	1	20 8404
5.5	160	100	1	20 8406
6	110	50	1	20 8408
6	160	100	1	20 8410
6	210	150	1	20 8412
6	260	200	1	20 8414
6.5	110	50	1	20 8416
6.5	160	100	1	20 8418
6.5	210	150	1	20 8420
7	160	100	1	20 8422
7	210	150	1	20 8424
8	110	50	1	20 8426
8	160	100	1	20 8428
8	210	150	1	20 8430
8	260	200	1	20 8432
8	310	250	1	20 8434
8	450	400	1	20 8436
10	110	50	1	20 8438
10	160	100	1	20 8440
10	210	150	1	20 8442
10	260	200	1	20 8444
10	310	250	1	20 8446
10	450	400	1	20 8448
10	600	550	1	20 8450
12	160	100	1	20 8452
12	210	150	1	20 8454
12	260	200	1	20 8456
12	310	250	1	20 8458
12	450	400	1	20 8460
12	600	550	1	20 8462
14	160	110	1	20 8464
14	200	150	1	20 8466
14	250	200	1	20 8468
14	300	250	1	20 8470
14	450	400	1	20 8472
14	600	550	1	20 8474
16	200	150	1	20 8476
16	260	200	1	20 8478
16	300	250	1	20 8480
16	450	400	1	20 8482
16	600	550	1	20 8484



## SDS-MAX hammer drill

with carbide tipped blades, 12 - 15 mm  $\varnothing = 2$  blades, from 16 mm in  $\varnothing = 4$  blades, with SDS-MAX receivers system, suitable for all machines with SDS-MAX receivers.

$\varnothing$ mm	Total length	Spiral length		
12	340	200	1	20 8100
	540	400	1	20 8102
	690	550	1	20 8104
14	340	200	1	20 8106
	540	400	1	20 8108
15	340	200	1	20 8110
	540	400	1	20 8112
16	340	200	1	20 8114
	540	400	1	20 8116
18	340	400	1	20 8118
	540	400	1	20 8120
20	320	200	1	20 8122
	520	400	1	20 8124
	920	800	1	20 8126
22	320	200	1	20 8128
	520	400	1	20 8130
	920	800	1	20 8132
24	320	200	1	20 8134
	520	400	1	20 8136
25	320	200	1	20 8138
	520	400	1	20 8140
	920	800	1	20 8142
28	370	250	1	20 8144
	570	450	1	20 8146
30	370	250	1	20 8150
	570	450	1	20 8152
32	370	250	1	20 8154
	570	450	1	20 8156
	920	800	1	20 8158
35	370	250	1	20 8160
	570	450	1	20 8162
	670	550	1	20 8164
38	370	250	1	20 8166
	570	450	1	20 8168
40	370	250	1	20 8170
	570	450	1	20 8172
	920	800	1	20 8174



## Multi-purpose drill bit

with carbide tipped blades and cylindrical shaft. The ideal universal drill bit for a variety of materials used during construction. A slight impact may be used when drilling in masonry and stone.

$\varnothing$ mm	Total length	Spiral length		
4	85	41	1	20 1880
5	95	44	1	20 1882
6	100	54	1	20 1884
7	110	59	1	20 1886
8	120	63	1	20 1888
10	120	83	1	20 1890
12	150	99	1	20 1892



## SDS-Plus chisel

### Pointed chisel

for the laying of lines, for all types of chiselling / demolition works as well as breakthrough works.

11 mm, round	250	1	20 8002
14 mm, square	250	1	20 8004

### Flat chisel

for selective breaking actions, all types of chiselling / demolition works and breakthrough works.

20 mm	250	1	20 8010
-------	-----	---	---------

### Spade chisel

for the large-scale universal removal of material.

40 mm	250	1	20 8006
-------	-----	---	---------

### Gouge

for the pulling of narrow channels into concrete and masonry.

22 mm	250	1	20 8020
-------	-----	---	---------

### Tile chisel

for the removal of tiles.

40 mm	250	1	20 8012
75 mm	165	1	20 8000

### Winged chisel

for the stemming, cutting and pulling of channels with a depth restriction.

22 mm	250	1	20 8008
-------	-----	---	---------

### Jointing chisel

for the removal and cleaning of joints and masonry.

25 mm	250	1	20 8014
-------	-----	---	---------

### HM jointing chisel

for the removal and cleaning of joints and masonry with an extra-long service life.

32 mm	125	1	20 8016
32 mm	200	1	20 8018

## SDS-Max chisel

### Pointed chisel

for the laying of lines, for all types of chiselling / demolition works as well as breakthrough works.

	280	1	20 8030
	400	1	20 8032
	600	1	20 8034

### Flat chisel

for selective breaking actions, all types of chiselling / demolition works and breakthrough works.

25 mm	280	1	20 8036
25 mm	400	1	20 8038
25 mm	600	1	20 8040

### Spade chisel

for the large-scale universal removal of material.

50 mm	400	1	20 8042
80 mm	300	1	20 8044
115 mm	350	1	20 8060

### Channel chisel

for the pulling, stemming and cutting of channels.

32 mm	300	1	20 8046
-------	-----	---	---------

### Gouge

for the pulling of narrow channels into concrete and masonry.

26 mm	300	1	20 8050
-------	-----	---	---------





## HSS step drill for screwed cable glands

special design for centric core holes and through-holes for metric screwed cable glands,  
with 2 flutes

Drilling range

M 12 - 32	1	20 1275
-----------	---	---------

## Special step drill for screw puncher

HSS step drill for the burr-free drilling of through-holes for screw puncher tension bolts in sizes M 8 ( $\frac{3}{8}$ ") – M 10 ( $\frac{7}{16}$ ") – M 12 – M 16 –  $\frac{3}{4}$ " – M 20 in materials up to 4 mm in thickness. Suitable for use in hand and box column drills, total of 9 drill steps, receiver shaft ( $\varnothing$  10 mm) with 3 driver carriers prevents slipping in the chuck.

1	20 1212
---	---------

## Step drill

for mechanical engineering and sheet metal processing, manufactured from HSS, complete with 2 blades, increasing by 1 mm

Drilling range $\varnothing$ mm	Max. drilling depth mm	Receiver shaft $\varnothing$ mm		
4 - 12	5	6	1	20 1214
12 - 20	4	9	1	20 1216
20 - 30	4	12	1	20 1218

## Drilling paste

50 g	1	20 1307
------	---	---------

## Sheet taper drill

for the burr-free processing of thin materials, manufactured from HSS

Drilling range

$\varnothing$ mm	Shaft $\varnothing$ mm	Size	Length mm		
3 - 9.1	6		60	1	20 1294
3 - 11.2	6		60	1	20 1295
3 - 14.0	6	0	60	1	20 1280
8 - 20.0	8	1	62	1	20 1282
16 - 30.0	10	2	72	1	20 1284
25 - 40.0	12	3	83	1	20 1286

## Sheet taper drill assortment

in sheet steel cassette, with drilling paste

1 unit each of No. 20 1280, No. 20 1282, No. 20 1284	1	20 1300
--	---	---------

## Aerial drill

manufactured from HSS

Drilling range

$\varnothing$ mm	Shaft $\varnothing$ mm	Size	Length mm		
9.5 - 22.5	8	1	80	1	20 1290
4.0 - 30.5	10	2	100	1	20 1293

## Milling drill

manufactured from premium-quality HSS for excellent performance and high durability, ground milling teeth and deep-ground flutes for drilling, milling, separating, rasping and filing of wood, chipboard, plastics, aluminum, other non-ferrous metals, steel sheets, plasterboard.

$\varnothing$ mm	Length mm		
6,35 ( $\frac{1}{4}$ ")	94	1	20 1298

## 90° countersink bit

manufactured from HSS, 3 blades, with axial and radial back taper,  $\frac{1}{4}$ " shaft, according to DIN 3126

$\varnothing$ mm	For M	Length mm		
6.3	3	31	1	20 1982
8.3	4	31	1	20 1983
10.4	5	34	1	20 1984
12.4	6	35	1	20 1985
16.5	8	38	1	20 1986
20.5	10	42	1	20 1987



## 90° countersink bit assortment

6 piece, in sheet steel cassette

1 unit each of countersink bit 6.3 - 20.5 mm ø	1	20 1989
--	---	---------

## Combination thread taps

drilling - thread cutting - deburring in a single work stage, manufactured from HSS, suitable for steel and non-ferrous metals, for material thicknesses up to 1 x diameter

M 3	1	20 7372
M 4	1	20 7373
M 5	1	20 7374
M 6	1	20 7375
M 8	1	20 7376
M 10	1	20 7377

## Combination thread tap assortment

for core hole drilling, thread cutting and deburring in a single work stage, with 1/4" hexagonal shaft. This product is used in the processing of steel non-ferrous metals and plastics. Particularly useful for assembly work and small batches, supplied in a practical plastic box.

1 unit each of M 3 - 4 - 5 - 6 - 8 - 10	1	20 7360
---	---	---------

## HSS thread tap bits

in metal box, with thread taps according to DIN 352 for metric standard threads,

3 piece bits with roughing tap, middle tap and finish tap, 1 bit each in sizes M 3 - 4 - 5 - 6 - 8 - 10 - 12

	1	20 3920
--	---	---------

additionally with HSS twist drills (core hole drills)

2.5 - 3.3 - 4.2 - 5 - 6.8 - 8.5 - 10.2 mm ø	1	20 3924
---	---	---------

## Hand thread tap DIN 352/HSS

for metric ISO thread according to DIN 13 (6 H tolerance), 3-piece bit: roughing tap - middle tap - finish tap

Thread	Increase mm	Shaft-ø mm	Total length mm		
M 1.0	0.25	2.5	32	1	20 2100
M 2.0	0.40	2.8	40	1	20 2110
M 2.2	0.45	2.8	40	1	20 2112
M 2.5	0.45	2.8	40	1	20 2114
M 3.0	0.45	2.8	40	1	20 2116
M 3.5	0.60	4.0	45	1	20 2118
M 4.0	0.70	4.5	45	1	20 2120
M 5.0	0.80	6.0	50	1	20 2123
M 6.0	1.00	6.0	50	1	20 2124
M 7.0	1.00	6.0	40	1	20 2125
M 8.0	1.25	6.0	56	1	20 2126
M 9.0	1.25	7.0	63	1	20 2127
M 10.0	1.50	7.0	70	1	20 2128
M 11.0	1.50	8.0	70	1	20 2129
M 12.0	1.75	9.0	75	1	20 2130

## HSS thread tap (Direct cut)

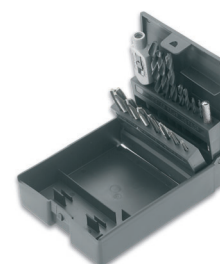
DIN 352/B cutting thread tap with spiral point, for metric standard thread, supplied in a plastic box

1 unit each of thread tap sizes M 3 - 4 - 5 - 6 - 8 - 10 - 12

1 unit each of HSS twist drill (core hole drills) in sizes 2.5 - 3.3 - 4.2 - 5.0 - 6.8 - 8.5 - 10.2 mm

1 tap wrench, size 1 1/2 (for M 1 - M 12 thread tap)

	1	20 3070
--	---	---------



NEW

## HSS thread tap (direct cut)

with exposed teeth, dimensions according to DIN 352, for metric ISO thread according to DIN 13

Thread	Increase mm	Shaft-ø mm	Total length mm		
M 3.0	0.50	0.50	40	1	20 3050
M 4.0	0.70	0.70	45	1	20 3051
M 5.0	0.80	0.80	50	1	20 3052
M 6.0	1.00	1.00	50	1	20 3053
M 8.0	1.25	1.25	56	1	20 3054
M 10.0	1.50	1.50	70	1	20 3055
M 12.0	1.75	1.75	75	1	20 3060

## Tool holder

with ratchet for clockwise and anti-clockwise rotation, chrome plated

Clamping range mm	DIN	ISO			
2.6 - 5.5	M 3 - 10	M 3 - 6	85	1	20 7170
4.6 - 8	M 5 - 12	M 6 - 12	110	1	20 7172

## Adjustable tap wrenches DIN 1814

for thread taps according to DIN 352

Size	mm	For thread tap metr. M	Wwth. tube G		
0	2.1 - 4.9	1 - 8	1/16 - 1/4	-	1 20 7150
1	2.1 - 5.5	1 - 10	1/16 - 3/8	-	1 20 7151
1 1/2	2.1 - 7	1 - 12	1/16 - 1/2	-	1 20 7152
2	3.8 - 7	4 - 12	3/16 - 1/2	3/8 - 1/4	1 20 7153
3	4.9 - 12	5 - 21	1/4 - 3/4	1/8 - 3/8	1 20 7154
4	5.5 - 16	9 - 27	3/8 - 1	1/8 - 3/4	1 20 7155

## HSS thread cutting tool bit

for metric standard threads.

Supplied in metal box, with thread taps according to DIN 352, 3 piece bit in sizes M 3 - 4 - 5 - 6 - 8 - 10 - 12,

threading die according to DIN 223 in sizes M 3 - 4 - 5 - 6 - 8 - 10 - 12, thread gauge,

Threading die holder mm 20 x 5 - 20 x 7 - 25 x 9 - 30 x 11 - 38 x 14

tap wrench size 1 - size 2

	1	20 3930
--	---	---------

## Nipple threading die

with guidance, threading die and interchangeable thread tap

M 10 + M 13	1	14 1000
M 10 x 1 mm	1	14 1002
M 13 x 1 mm	1	14 1004

## Threading die DIN 223

pre-slit, for metric ISO threads according to DIN 13 (6 G tolerance)

Thread	Increase mm	External ø mm	Height mm		
M 2.0	0.40	16	5	1	20 3610
M 2.2	0.45	16	5	1	20 3612
M 2.5	0.45	16	5	1	20 3614
M 3.0	0.50	20	5	1	20 3616
M 3.5	0.60	20	5	1	20 3618
M 4.0	0.70	20	5	1	20 3620
M 5.0	0.80	20	7	1	20 3623
M 6.0	1.00	20	7	1	20 3624
M 7.0	1.00	25	9	1	20 3625
M 8.0	1.25	25	9	1	20 3626
M 9.0	1.25	25	9	1	20 3627
M 10.0	1.50	30	11	1	20 3628
M 11.0	1.50	30	11	1	20 3629
M 12.0	1.75	38	14	1	20 3630

NEW



NEW



NEW



## Threading die holder DIN 225

for DIN 223 threaded dies

Size	For thread metr. M	Wwth.	Length mm		
0	1 - 2 - 6	1/16 - 3/32	16 x 5	1	20 7200
1	3 - 4	1/8 - 5/32	20 x 5	1	20 7201
2	4.5 - 6	3/16 - 1/4	20 x 7	1	20 7202
3	7 - 9	5/16	25 x 9	1	20 7203
4	10 - 11	3/8 - 7/16	30 x 11	1	20 7204
5b	12 - 14	1/2 - 9/16	38 x 14	1	20 7206



further thread taps, threading dies and tool holders available upon request.

## Thread repair assortment

for metric standard threads in sizes M 5 x 0.8 mm - M 6 x 1 mm - M 8 x 1.25 mm - M 10 x 1.5 mm - M 12 x 1.75 mm, the following items are clearly contained in a stable metal box: twist drill for drilling, cutting tap especially for thread attachments, hand installation tool complete with locking ring for the screwing-in of the thread attachments, pin breaker, 25 thread inserts each per size (only 10 units of M 12 size), meaning a total of 100 attachments. The thread attachments are manufactured from stainless steel, are free running and have nominal dimension length of diameter x 1.5. The system is fully compatible with other leading brands.

360 x 230 x 30 1 20 1245



## Thread cutting tools for screwed cable glands

### Thread tap

for metric screwed cable glands, also in plastic, not in VA stainless steel

	Total length	Thread length		
M 12 x 1.5	70	24	1	14 0850
M 16 x 1.5	74	26	1	14 0852
M 20 x 1.5	80	28	1	14 0854
M 25 x 1.5	93	33	1	14 0856
M 32 x 1.5	105	38	1	14 0858
M 40 x 1.5	105	38	1	14 0860
M 50 x 1.5	120	40	1	14 0862
M 63 x 1.5	120	40	1	14 0864



for tube PG (steel conduit thread) according to DIN 40430 PG

PG 7	70	24	1	14 0970
PG 9	74	26	1	14 0972
PG 11	76	26	1	14 0974
PG 13.5	80	28	1	14 0976
PG 16	85	30	1	14 0978
PG 21	93	33	1	14 0980
PG 29	105	38	1	14 0982
PG 36	110	40	1	14 0984
PG 42	120	40	1	14 0986
PG 48	120	40	1	14 0988

## Adjustable tap wrenches

short design

for thread taps

M	Inch	PG		
7 - 18	1/4" - 3/4"	7 - 21	1	14 1020
20 - 63	1/2" - 2 1/2"	11 - 48	1	14 1022



## Screw dies

to the clip housing

for metric screwed cable glands

	Blade quantity	L x W x H mm		
M 12 x 1.5	4	47 x 47 x 14	1	14 0889
M 16 x 1.5	4	47 x 47 x 14	1	14 0890
M 20 x 1.5	4	47 x 47 x 14	1	14 0891
M 25 x 1.5	6	47 x 47 x 14	1	14 0892
M 32 x 1.5	6	71 x 71 x 19	1	14 0893
M 40 x 1.5	6	71 x 71 x 19	1	14 0894
M 50 x 1.5	8	100 x 100 x 20	1	14 0895
M 63 x 1.5	8	100 x 100 x 20	1	14 0896

for tube PG (steel conduit thread) according to DIN 40430 PG

PG 7	4	47 x 47 x 14	1	14 0910
PG 9	4	47 x 47 x 14	1	14 0912
PG 11	4	47 x 47 x 14	1	14 0914
PG 13.5	4	47 x 47 x 14	1	14 0916
PG 16	4	47 x 47 x 14	1	14 0918
PG 21	6	47 x 47 x 14	1	14 0920
PG 29	7	71 x 71 x 19	1	14 0922
PG 36	8	71 x 71 x 19	1	14 0924
PG 42	8	100 x 100 x 20	1	14 0926
PG 48	10	100 x 100 x 20	1	14 0928

## Guides

to the clip housing

for metric screwed cable glands

M 12	1	14 0869
M 16	1	14 0870
M 20	1	14 0871
M 25	1	14 0872
M 32	1	14 0873
M 40	1	14 0874
M 50	1	14 0875
M 63	1	14 0876

for tube PG

PG 7	1	14 0930
PG 9	1	14 0932
PG 11	1	14 0934
PG 13.5	1	14 0936
PG 16	1	14 0938
PG 29	1	14 0940
PG 42	1	14 0942

## Tap wrench for steel conduit thread

manufactured from malleable cast iron, with steel tube arms, without accessories

M 12 - 25 / PG 7 - 21	1	14 0900
M 32 - 40 / PG 29 - 36	1	14 0902
M 50 - 63	1	14 0884
PG 42 - 48	1	14 0904

## Tap wrench for steel conduit thread

with screw dies and guidance

M 16 - 25	1	14 0886
M 32 - 40	1	14 0887
M 50 - 63	1	14 0888
PG 9 - 21	1	14 0950
PG 29 - 36	1	14 0952

with adjustable guide (guide rings not required)

M 12 - M 25	1	14 0966
M 30 - M 40	1	14 0968
PG 7 - 21	1	14 0960
PG 29 - 36	1	14 0964



## Step thread tap for metric screwed cable glands

step thread tap manufactured from the most suitable oil-hardened tool steel for the most common metric screwed cable glands. Suitable for working with plastic and metal as well as stainless steel, between 5 and 6 threads per step, drive via hexagonal shaft (e.g. via ring, open-end or socket wrench). Approximately 85 % of all screwed cable glands are covered with the M 12 - M 32 drill bit (order number 20 1240), approximately 90 % of all screwed cable glands are covered with both of the other drill bits. Compared to many single thread taps, the step thread taps offer a cost saving of up to 25 %.

For screwed cable glands	Length	Hexagonal wrench size		
M 12 - 16 - 20 - 25 - 32	80	13	1	20 1240
M 12 - 16 - 20	55	10	1	20 1242
M 25 - 32 - 40	55	13	1	20 1244

## Step drill and thread tap assortment for screwed cable glands

compact set for the drilling of centric core holes and through-holes as well as for the thread cutting of metric screwed cable glands according to DIN EN 60 423, supplied in a handy plastic transport case. Assortment comprises of 1 HSS step drill for burr-free drilling and reaming, double-edged, with solid centring point and 13 laser-marked drilling steps for through-holes and core holes for screw glands measuring between M 12 and M 32, 12 mm ø receiver shaft with 3 driver carriers to protect against the drill bit from slipping in the chuck, 5 HSS cutting thread taps (direct taps) sorted by ISO fine thread M 12 x 1.5 - M 16 x 1.5 - M 20 x 1.5 - M 25 x 1.5 - M 32 x 1.5, 45 mm long design, with hexagonal drive shaft (10 / 13 mm) for single-handed work even on areas difficult to reach, actuation via socket wrench (groove and ratchet), but also via spanner and ring wrenches.

6 piece	1	20 1250
---------	---	---------

## Nozzle reamer

12 nozzle reamers and holders, supplied in plastic box

0.61 - 1.9 mm ø	10	20 4815
-----------------	----	---------

## Diamond cutting disk

for dry grinding, suitable for all standard angle grinders (holding fixture 22.2 mm ø)

Sinter-fused diamond stud design, medium hardness (marble, shale)

115	1	20 7950
125	1	20 7952

Turbo segment design for dry and wet cutting. For granite, concrete, natural stone, exposed aggregate concrete, hard bricks, roofing tiles (particular problem solver on wall grinders and joint cutters). Tested according to UVV VBG 49 regulation.

115	1	20 7960
125	1	20 7962
150	1	20 7964
180	1	20 7966
230	1	20 7968

Fully-covered, sintered-on diamond layer design, smooth steel core with cooling holes (tiles, thin granites, natural stones)

115	1	20 7970
125	1	20 7972
150	1	20 7974
180	1	20 7976
230	1	20 7978

Lasered diamond segment and black steel blade design, increased segment thickness, for abrasive materials for wall grinders (sand-lime brick, plaster, masonry, screed, sandstone)

115	1	20 7980
125	1	20 7982
150	1	20 7984



## Cased drill bit

safety cased drill bit manufactured from chrome-vanadium steel for wood, lightweight boards, plasterboards, not suitable for concrete and stone.

ø mm

6	400	1	20 6306
	600	1	20 6346
8	400	1	20 6308
	600	1	20 6348
10	400	1	20 6310
	600	1	20 6350
12	400	1	20 6312
	600	1	20 6352
14	400	1	20 6314
	600	1	20 6354
16	400	1	20 6316
	600	1	20 6356
18	400	1	20 6318
	600	1	20 6358
20	400	1	20 6320
	600	1	20 6360
22	400	1	20 6322
	600	1	20 6362
24	400	1	20 6324
	600	1	20 6364
25	400	1	20 6325
	600	1	20 6365
26	400	1	20 6326
	600	1	20 6366
28	400	1	20 6328
	600	1	20 6368
30	400	1	20 6330
	600	1	20 6370



## Hole saws manufactured from HSS bi-metal with Vario toothing

the variable tooth distribution (4 - 6 teeth per inch) ensures vibration-free drilling. Hole saws with receiver thread, from 32 mm ø additional driver holes. For the rational drilling of steel, cast iron, stainless steel, copper, non-ferrous metals, hard and soft wood, sheetrock boards and other materials. Saw length 50 mm, max. drilling depth 40 mm, M 16 receiver thread. For receiver shafts (order number 20 7580 and 20 7588).

ø mm

14	1	20 7414
16	1	20 7416
17	1	20 7417
19	1	20 7419
20	1	20 7420
21	1	20 7421
22	1	20 7422
24	1	20 7424
25	1	20 7425
27	1	20 7427
29	1	20 7429
30	1	20 7430



## Hole saws manufactured from HSS bi-metal with Vario toothing

the variable tooth distribution (4 - 6 teeth per inch) ensures vibration-free drilling. Hole saws with receiver thread, from 32 mm ø additional driver holes. For the rational drilling of steel, cast iron, stainless steel, copper, non-ferrous metals, hard and soft wood, sheetrock boards and other materials. Saw length 50 mm, max. drilling depth 40 mm, M 16 receiver thread. For receiver shafts (order number 20 7584, 20 7586 and 20 7589).

ø mm

32	1	20 7432
35	1	20 7435
37	1	20 7437
38	1	20 7438
40	1	20 7440
41	1	20 7441
43	1	20 7443
44	1	20 7444
45	1	20 7445
46	1	20 7446
48	1	20 7448
50	1	20 7450
51	1	20 7451
52	1	20 7452
54	1	20 7454
55	1	20 7455
57	1	20 7457
59	1	20 7459
60	1	20 7460
64	1	20 7464
65	1	20 7465
67	1	20 7467
68	1	20 7468
70	1	20 7470
73	1	20 7473
75	1	20 7475
76	1	20 7476
79	1	20 7479
83	1	20 7483
86	1	20 7486
89	1	20 7489
92	1	20 7492
95	1	20 7495
98	1	20 7498
100	1	20 7500
102	1	20 7502
105	1	20 7505
111	1	20 7511
114	1	20 7514
121	1	20 7521
127	1	20 7527
140	1	20 7540
146	1	20 7546
152	1	20 7552



## Hole saws for switch boxes

complete with drive arbor (order number 20 7584), guide drill bit and push-out spring.

68	1	20 7562
68	1	20 7563



## Drive arbors

complete with guide drill bit order number 20 7590 and male thread, suitable for all HSS bi-metal hole saws  
9.5 mm hexagonal bar, without driver

for hole saws 14 - 30 mm ø	1	20 7580
for hole saws 32 - 152 mm ø	1	20 7581
11 mm hexagonal bar, with driver		
for hole saws 32 - 152 mm ø	1	20 7584

11 mm hexagonal bar, with driver and and internal counternut

for hole saws 32 - 152 mm ø	1	20 7586
-----------------------------	---	---------

SDS receiver, without driver

for hole saws 14 - 30 mm ø	1	20 7588
----------------------------	---	---------

SDS receiver, with driver

for hole saws 32 - 152 mm ø	1	20 7589
-----------------------------	---	---------

## HSS center drill

for drive arbors order numbers 20 7580, 20 7581, 20 7584, 20 7586, 20 7588 and 20 7589

6.35 mm ø - 70 mm in length	1	20 7590
6.35 mm ø - 115 mm in length	1	20 7592

## Push-out spring

suitable from 52 mm ø

	1	20 7596
--	---	---------

## Edge countersinker

for HSS bi-metal hole saws with 68 mm ø, with two specially-hardened cutting teeth

	1	20 7598
--	---	---------

## HSS bi-metal – hole saw assortments

### ELEKTRO-TOP with edge countersinker

Contents: One hole saw each in sizes 35 mm, 68 mm, 75 mm ø  
Edge countersinker for 68 mm ø, with two specially-hardened cutting teeth.  
Receiver shaft with two driver pins No. 20 7584  
HSS guide drill bit, 6.35 mm ø, length 70 mm  
Push-out spring (for all saws from 52 mm ø)  
Comprehensive drilling instructions, supplied in shock-proof plastic box

	1	20 7400
--	---	---------

### ELEKTRO METRIC

with 6 hole saws for the drilling of through-holes for metric screwed cable glands

Receiver shafts with HSS guide drill bit, (order number 20 7580 and 20 7584)

Hole saw ø mm

20	20 7420
25	20 7425
32	20 7432
40	20 7440
50	20 7450
64	20 7464
	1 20 7573

## Socket cutter

hole saw with metal body, 6 mm ø receiver shaft, induction-hardened saw tips, cutting depth 19 mm

7 saw attachments 25 (1") - 32 (1 1/4") - 38 (1 1/2") - 44 (1 3/4") - 51 (2") - 57 (2 1/4") - 63 (2 1/2") mm ø

for wood and rigips	1	12 0882
---------------------	---	---------



## Hard metal hole saws

for the rational drilling of:

sheetrock boards, Ytong stone, aerated concrete, wood, chipboard, plywood, hard cardboard, PVC, plastic coated boards, glass fibre boards

Saw length: 66 mm, max. drilling depth: 58 mm, M 16 receiver thread, for hole saws

ø mm

35	1	20 7714
68	1	20 7728
71	1	20 7730
74	1	20 7732

## Hard metal edge countersinker

with 2 teeth

for 68 mm ø hard metal hole saws

	1	20 7750
--	---	---------

## Drive arbors

without guide drill bit, with M 15 receiver thread

cylindrical 13 mm ø receiver, 3 driver carriers	70	1	20 7760
SDS receiver system	70	1	20 7764

## Center drill

hard metal-equipped

8 mm ø	100	1	20 7770
--------	-----	---	---------

## Hard metal hole saw

68 mm ø, with edge countersinker, receiver shaft and HM guide drill bit

with 13 mm ø receiver shaft (order number 20 7760)	1	20 7740
with SDS receiver shaft (order number 20 7764)	1	20 7744

## Hard metal hole saw assortment, 5 piece

in steel sheet case, 3 hole saws, edge countersinkers for 68 mm ø, 13 mm ø receiver shaft,

1 each of HSS and hard metal guide drill bit

Hole saws ø mm

35, 68, 74	1	20 7700
------------	---	---------

## Diamond core drill bit

laser-welded diamond studs, for dry cutting, no regrinding required, excellent drilling capacity and high durability.

**Drilling without impact** in general masonry, stone and concrete, quadro stone, sand-lime brick.

M 16 receiver thread, total length 80 mm, maximum drilling depth 70 mm.

Diamond stud quantity (segments)

6	ø 68	1	20 7380
10	ø 82	1	20 7382

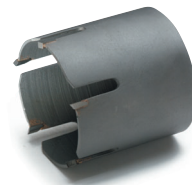
## Drive arbors

for diamond core drill bit, M 16 receiver thread

Size 12 shaft (hexagonal)	1	20 7384
SDS receiver system	1	20 7385

## Hard metal center drill

for shaft (order number 20 7384)	9 mm ø x 120 mm	1	20 7386
----------------------------------	-----------------	---	---------



## Diamond core drill bit

complete with drive arbors and HM centring drill  
with drive arbor (order number 20 7384)

Hexagonal size 12	ø 68	1	20 7378
	ø 82	1	20 7379

with drive arbor (order number 20 7385)

SDS receiver system	ø 68	1	20 7388
	ø 82	1	20 7389

## Engineer's file assortment, 5 piece

with cross cut, cut 2 (medium-fine), length 200 mm, with wooden grip, suitable for metal as well as wood and plastic

1 unit each	□ △ □ ▽ ○	1	20 6806
-------------	-----------	---	---------

## Engineer's files

according to DIN 7261, without grip

Shape A, flat hand □

Cut 1	150	10	20 6502
	200	10	20 6503
	250	10	20 6504
	300	5	20 6505
Cut 2	150	10	20 6512
	200	10	20 6513
	250	10	20 6514
	300	5	20 6515
Cut 3	150	10	20 6522
	200	10	20 6523
	250	10	20 6524
	300	5	20 6525

Shape C, triangular △

Cut 1	150	10	20 6532
	200	10	20 6533
	250	5	20 6534
	300	5	20 6535
Cut 2	150	10	20 6542
	200	10	20 6543
	250	5	20 6544
	300	5	20 6545
Cut 3	150	10	20 6552
	200	10	20 6553
	250	5	20 6554
	300	5	20 6555

Shape D, square □


Cut 1	150	10	20 6561
	200	10	20 6562
	250	10	20 6563
	300	5	20 6564
Cut 2	150	10	20 6571
	200	10	20 6572
	250	10	20 6573
	300	5	20 6574
Cut 3	150	10	20 6581
	200	10	20 6582
	250	10	20 6583
	300	5	20 6584



## Engineer's files

according to DIN 7261, without grip

Shape E, semi-circular 

Cut 1	150	10	20 6592
	200	10	20 6593
	250	10	20 6594
	300	5	20 6595
Cut 2	150	10	20 6602
	200	10	20 6603
	250	10	20 6604
	300	5	20 6605
Cut 3	150	10	20 6612
	200	10	20 6613
	250	10	20 6614
	300	5	20 6615
Shape F, round 			
Cut 1	150	10	20 6622
	200	10	20 6623
	250	10	20 6624
	300	5	20 6625
Cut 2	150	10	20 6632
	200	10	20 6633
	250	10	20 6634
	300	5	20 6635
Cut 3	150	10	20 6642
	200	10	20 6643
	250	10	20 6644
	300	5	20 6645



## Rasps

without grip

Cut 1	250	1	20 6701
Cut 2	250	1	20 6711

## File grips






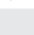
according to DIN ISO 395, manufactured from beech wood

for files mm

up to 100	80	20	20 6850
up to 125	100	20	20 6852
up to 200	120	20	20 6854
up to 300	140	20	20 6856
up to 350	160	20	20 6857

## Key file assortment

6 files with wooden grip, according to DIN 7283, shape A - B - C - D - E - F, length 100 mm

supplied in a plastic bag      	10	20 6750
---	----	---------

## File brush

for the cleaning of wood and metal files. With stable beech wood carrier and steel edging.

Working surface 115 mm x 40 mm	250	12	14 1325
--------------------------------	-----	----	---------

## Contact files

6 units in self-service tear-off bag

Length 160 mm	1 set	20 6760
---------------	-------	---------

## Contact brush

contact brush or spark plug brush with 0.15 mm ø curved brass edging and stable beech wood handles.

Double-row	100	12	14 1320
------------	-----	----	---------



## Universal deburrer

for all deburring works on drill holes as well as on straight, convex and concave edges (e.g. pipe inner and -outer edges), aluminium handle, interchangeable, hardened blade

1	20 8500
---	---------



## Jigsaw blades manufactured from CrV steel

self-service packaged, for wood, plastic up to 60 mm,

for AEG - Bosch - Metabo - machines	5	20 8506
-------------------------------------	---	---------

for Black + Decker - Skil - Fein - machines	5	20 8507
---	---	---------

## Jigsaw blades manufactured from HSS bi-metal

self-service packaged, for soft steel, aluminium, non-ferrous metal, stainless steel metal up to 4 mm

for AEG - Bosch - Metabo - machines	5	20 8522
-------------------------------------	---	---------

for Black + Decker - Skil - Fein - machines	5	20 8523
---	---	---------

